

Rotation measure study of disk-like galaxies at $z \sim 0.5$

Anna Williams¹,

Dr. Eric Wilcots¹, Dr. Ellen Zweibel¹, Dr Sui Ann Mao²

¹University of Wisconsin – Madison, ²MPiFR

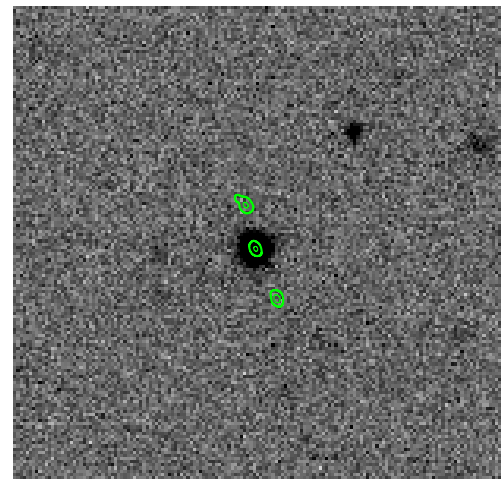
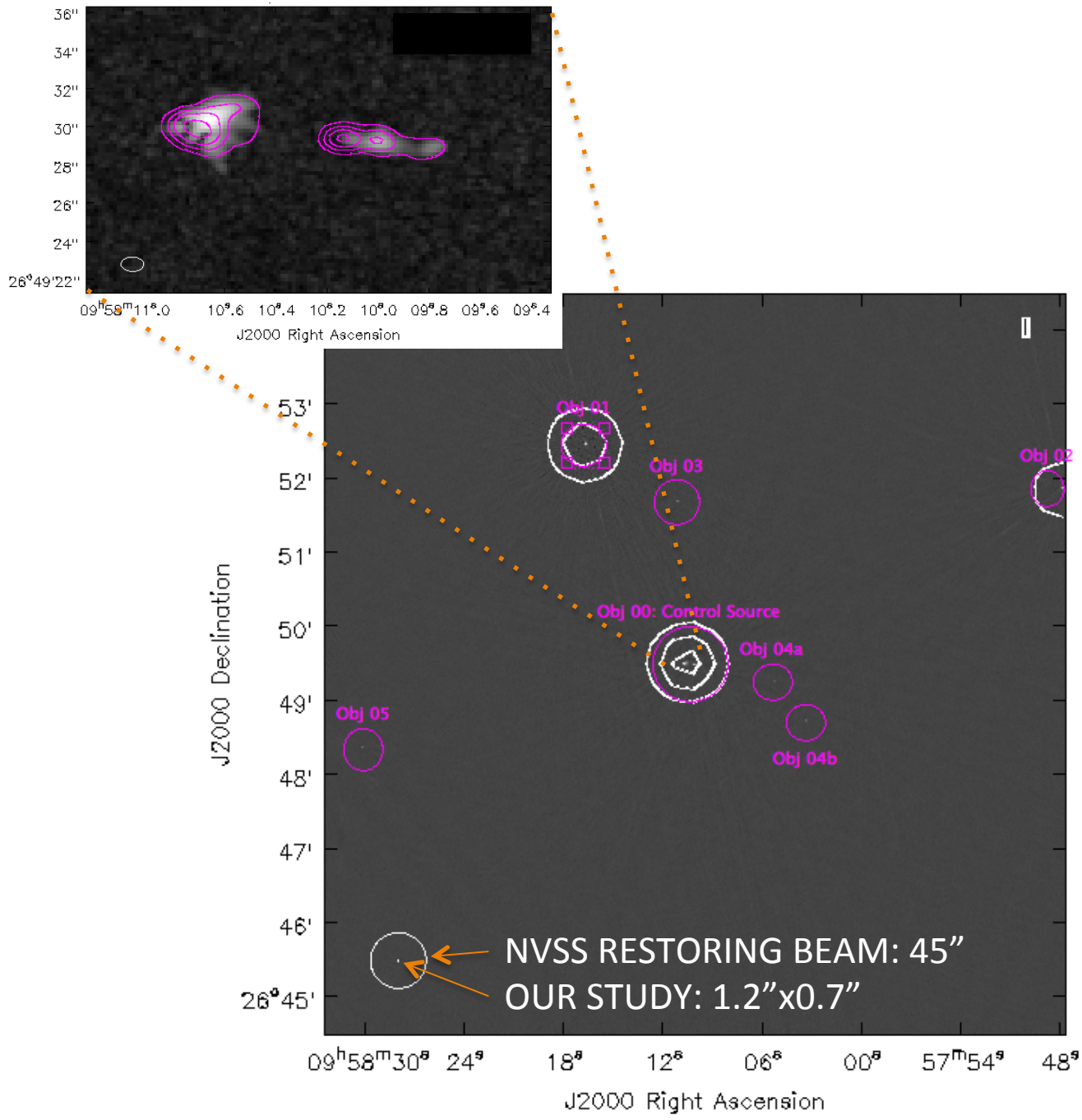
Email: williams@astro.wisc.edu



112 Control QSOs: $RM_{\text{Obs.}} = RM_{\text{MW}} + RM_{\text{QSO}} + \sigma_{\text{Obs+QSO+MW}}$



38 Target MgII Absorbers: $RM_{\text{Obs.}} = RM_{\text{MW}} + RM_{\text{INT}} + RM_{\text{QSO}} + \sigma_{\text{Obs+QSO+MW}}$



Resolved Target Source:
Polarized contours on
SDSS image

See poster for
results!