

The Role of Magnetic Fields in Infrared Dark Clouds

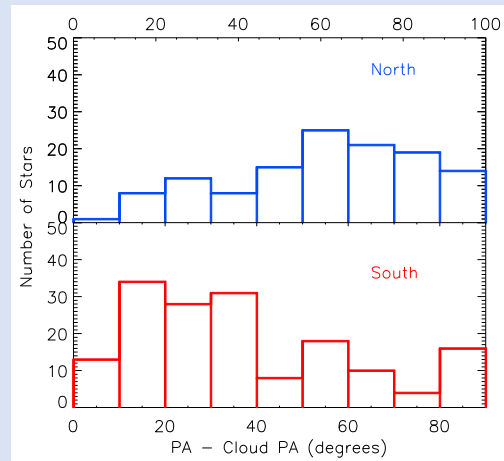
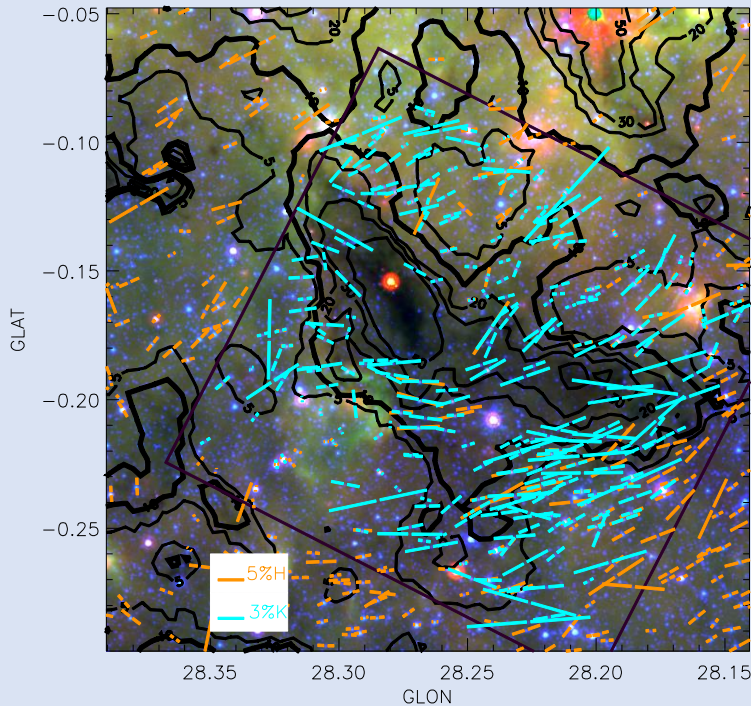
Sadia Hoq¹, D. Clemens¹, A. Guzmán², Ian Stephens¹

¹Astronomy Department, Boston University, Boston MA 02215; shoq@bu.edu; clemens@bu.edu;

²Universidad de Chile

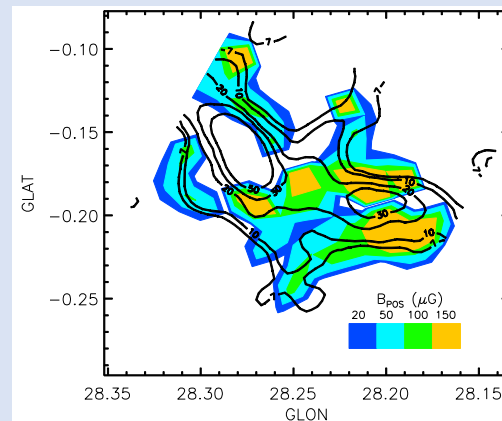
IRDC G28.23

- NIR Background Starlight Polarimetry
- H & K-band (1.6, 2.2 μm) Observations



Relative PAs:

- Neither preferentially parallel or perpendicular
- PA distributions of North and South differ significantly



Plane-of-Sky B-Field Strength:

- 20-600 μG
- B vs. n